



Exploring - References

In this document, we look at ways that you can add additional references into your document, using just the information from your EA Model. This should help to keep your document simple and easy to read, but allow readers to explore.

Section: Introduction

1 References

Generating documents from you EA model means you can improve the richness and readability of your documents, with very little extra work.

This document looks at how you can use the power of EA to create references within your documents, so that readers can follow their own curiosity by clicking on links to explore.

In the documents about Inline and Table formatting, we have already seen how relationships between elements can become hyperlinks in documents: here, we'll look at some more techniques.

We'll look at:

- Creating a Glossary
- Using EA internal links
- Creating Cross-reference reports

1.1 Tagged-value element references

1.1.1 Component - A Component

This component has an unusual tagged value.

The TV called 'relatedChange' is pre-defined (in [EA | Settings | UML Types | Tagged Value types](#)) as a special tagged value, which doesn't just have a value, it points to another EA element. In this case, that's restricted to an element of type 'Change'.

When eaDocX finds one of these, it either prints the name of the related element, or, if the element is present in the document, a hyperlink to the element.

In this case, we have chosen a Change instance which is described elsewhere in the document.

IMHO, this is a VERY STRANGE way to link two elements together: much better to create an explicit connector between them.

RelatedChange: [Change2](#)

1.2 Creating a Glossary

This is really simple with eaDocX and EA.

If you have been populating your EA model glossary with definitions, then eaDocX can create a customized glossary for your document. It will contain ONLY the terms from the EA glossary which occur in the document. And it gets updated each time you re-generate your document.

It can use both eaDocX-generated text, and manually-created text.

You may have already seen that EA will underline each terms it finds in the model glossary, so you can see which terms are defined, and which need a definition.

To create a glossary, just select **eaDocX | Insert | Project Glossary**, and a glossary section will be added.

eaDocX will also add a dotted-underline to the first occurrence of the term in your document.

1.3 Internal Links

Sometimes you may want to show a different kind of link in your EA model, by just mentioning another Package, Element or Diagram from within the Notes field of an element.

For example, this text comes from the Notes field of a Package, and can easily direct the user to other things which they might find interesting.

Things like:

- This [diagram](#) is quite interesting
- So is this [element](#).
- ..and this [Package](#)

1.4 Cross-reference reports

When you create a document where you want to print lots of hyperlinks, eaDocX can only create the hyperlink if the referenced element is actually in the document.

Where this happens, eaDocX can't print a hyperlink, so just prints plain text.

But what if you want to make all the linked material available to your readers. for example, as an appendix?

This section has an example of this.

It has a table of 'Change' elements, which reference some other Components and Requirements, but those elements are scattered all over the model.

So at the end of the document we have an appendix, with two Cross-Reference reports: one lists all the Components which are mentioned, and the other listing all the Requirements. So all the hyperlinks in the list of changes appear as proper hyperlinks, which let the reader see more details.

1.4.1 Some Changes

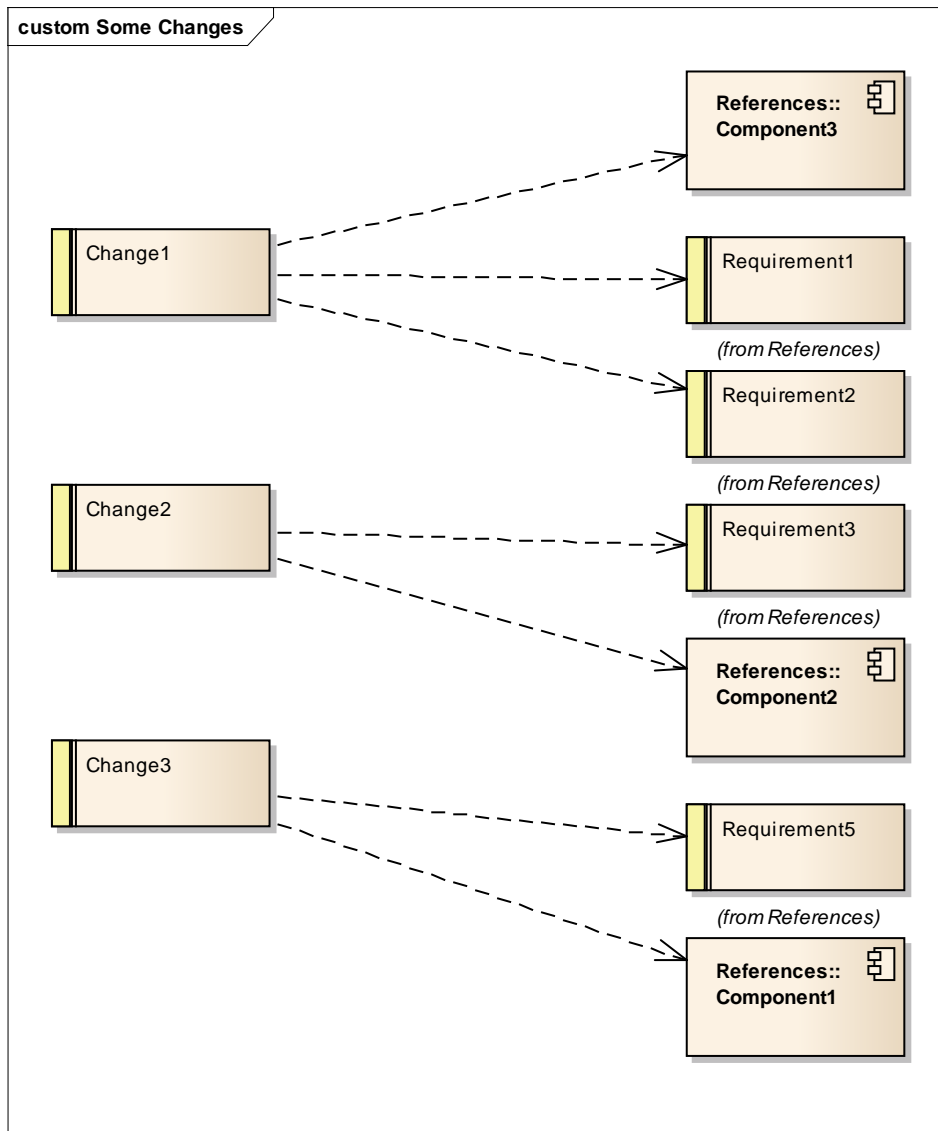


Figure 1 : Some Changes

Change	Created date	Last Updated date	Affected items
Change3	15/02/2013	15/02/2013	Requirement5 , Component1
Change2	15/02/2013	15/02/2013	Requirement3 , Component2
Change1	15/02/2013	15/02/2013	Requirement1 , Requirement2 , Component3

End

Section: Section1

2 Some Interesting data

The information in here should be referenced elsewhere in the model.

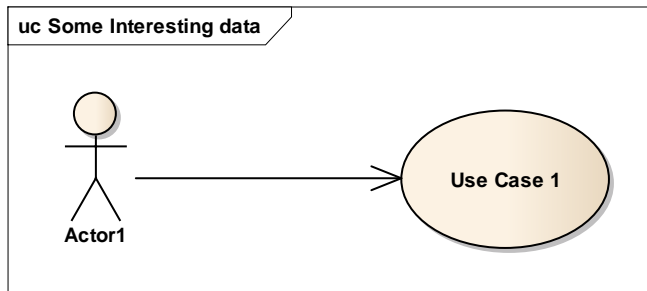


Figure 2 : Some Interesting data

Name	Description
Use Case 1	This is a use Case, which might be of interest to readers of this document.

End

Section: Glossary

Term	Definition	Type
EA	Enterprise Architect	Enterprise Architect
eaDocX	Document generator. A Extension or Add-in to the Enterprise Architect tool.	eaDocX
Glossary	A customized list of terms, updated each time your document is re-generated	eaDocX
section	A block of text in a Word document which is generated by eaDocX. A section may be a Package (and its child elements), a	eaDocX

Term	Definition	Type
	single element, a diagram, an Element or Matrix report, an Excel report or some project content such as a glossary.	

End

3 Appendix A – Items referenced elsewhere in this document

Section: RefComponents

3.1 Referenced Components

These are the Component elements which are referenced elsewhere in the document

Component	Ref	Description
Component1	CMP02	Description of Component 1
Component2	CMP01	Description of Component 2
Component3	CMP04	Description of Component 3

End

Section: RefRequirements

3.2 Referenced Requirements

This is a list of the Requirement element which are referenced elsewhere in this document. As the content of the main document changes, so the contents of this table will change. It's a good way to create an Appendix of detailed information, which can be referenced by the main document, keeping it smaller.

Ref	Requirement	Description
REQ01	Requirement5	Description of Requirement 5
REQ03	Requirement3	Description of Requirement 3
REQ01	Requirement1	Description of Requirement 1
REQ02	Requirement2	Description of Requirement 2

End